

2018/2019

**CITYHEALTH**<sup>®</sup>  
by CITYCOLLECTION

# The City Collection healthcare range targets **7 key industry requirements:**

- ✔ **Function and Recognition**  
Garments reflect the roles and functions of staff whilst each style projects a strong sense of identification and recognition.
- ✔ **A Colour Story**  
Promote a unified team look within one colour palette whilst enjoying a sense of individuality from every style and design.
- ✔ **Easy Care & Breathable Fabrics**  
Garments that are easy to wear & easy to care for.
- ✔ **Comfort & Practicality**  
With the physical nature of many roles (bending, lifting, reaching, and twisting), fabrics, styles and sizes must create comfortable attire that moves with you.
- ✔ **Durability & Presentation**  
Hard-wearing fabrics with long lasting quality to ensure that garments have longevity and maintain a professional appearance all day, everyday.
- ✔ **A Range of Designs and Sizes**  
From the design, style and cut of the shirts, consideration has been made for your body shape and height to accommodate your range of movement.
- ✔ **Quick Delivery**  
With every style, size and colour available on stock service, every order is processed and delivered promptly.





## CONTENTS

FEATURED PRODUCTS	6-39
<b>COLOUR OPTIONS</b>	
ROYAL	40-41
TEAL	42-43
BLUE	44-45
NAVY	46-47
RED	48-49
CHARCOAL	50-51
GRAPE	52-53
<b>DETAILS</b>	
FABRIC INDEX	54-58
SIZING GUIDE	59

**Featured Style:**  
2280 4 Way Stretch Tunic

**CITYHEALTH**<sup>®</sup>  
by CITYCOLLECTION



# Why do health City Collection

1

## Strong Identification

**Making it easier for clients to know who is providing care.**

**Clear recognition of staff.**

Visiting hospitals and aged care facilities can be a stressful and unfamiliar experience. Uniforms play an important identification role for patients as to whom is providing their care.

**Practical function.**

Our styles are practically designed to reflect the different roles within your care function and to make your staff easily recognisable.

**Reduce confusion.**

Identification and recognition of staff and the area where they operate, can reduce confusion for patients which creates a more relaxing environment within your facility.

4

## Design and finishes

**Helping you meet the demands of the day.**

**Range of styles.**

Styles are designed to be easy to wear, flattering to all shapes and sizes and available in a versatile colour palette complementing any team environment.

**Fabrics.**

The fabrics have been carefully researched and developed to ensure the styles are quick drying, require minimal ironing and are durable, cool and comfortable to wear.

**Wonder Button®**

Featured in selected styles, the innovative Wonder Button® is the perfect solution to eliminate bust gaping. The Wonder Button® provides that extra support and coverage to ensure you look professional and feel comfortable every day.

# and allied industries continually trust uniforms? Here are 6 reasons ...

## 2

### **The need to maintain a team environment**

#### **Reinforce a strong unified image.**

Start with your base colour. This may be your corporate brand colour or department specific colours.

Choose from our range of colours, Royal, Teal, Blue, Navy, Red, Charcoal and Grape.

The Healthcare industry is often divided into occupational categories. As colour is the sole identification tool between staff, clients and patients, we offer a range of styles and designs within a single colour story, ideal for differentiation with uniforms.

Tailored and fashionable designs with complimentary colours mean a positive response from staff.

## 3

### **Garments that work as hard as you do**

#### **Styles designed for the active work environment.**

Our range has been designed to suit the climate and environment in which you work and for each individuals unique shape and size.

We have also taken into consideration the physical nature of your role and your requirements that the garments are easy care, comfortable and durable.

All our garments have been styled to fit your staff comfortably as they perform their duties whilst still looking good at the end of the day.

## 5

### **Fabrics are blended to suit you!**

#### **Ezylin®**

#### **100% Breathable Polyester.**

Ezylin® has a special finish that quickly moves moisture away from the skin to the fabric surface, keeping you cool, dry and comfortable.

#### **City Stretch®**

#### **100% Polyester with Natural Stretch.**

A wrinkle free, lightweight breathable fabric that you can simply wash, hang and wear. Natural stretch that moves with you, without losing its shape.

#### **AeroSilver® Technology.**

A high performance fabric that helps regulate body temperature, keeping you cool, dry and comfortable.

The anti-bacterial properties makes it the most innovative technology in healthcare fibre construction.

## 6

### **Fast and reliable delivery**

#### **Stock Service.**

We carry large stocks to ensure your order is quickly processed and delivered on time. All styles are available on Stock Service.

#### **Service and Quality.**

As a local Australian team it is our ethos to ensure all garments are of quality craftsmanship and delivered to you when you need them.

#### **Commitment.**

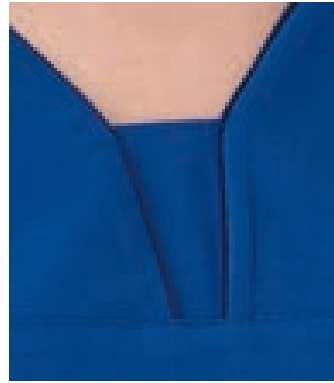
Our philosophy is simple, "understand what the client needs and deliver the very best - with no exceptions".

#### **Experience.**

With over 90 years experience in supplying shirts to the Australian market, our position remains as the most trusted and leading innovative provider of uniforms for healthcare professionals.

# 4 Way Stretch Tunic

Experience for yourself 360° comfort  
in this ultra flexible tunic.



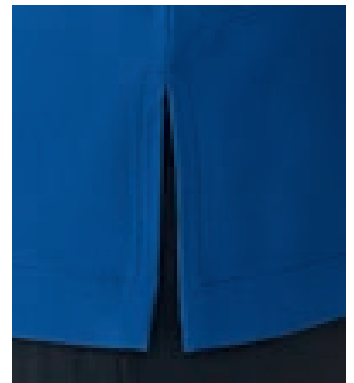
NECKLINE TRIM



POCKETS



AIR FLOW ACTION BACK



SIDE SPLITS

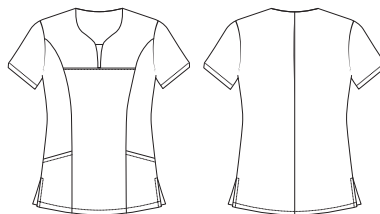
## STYLE DETAILS

**2280:** Short Sleeve

**Fabric:** 95% Polyester, 5% Spandex

**Sizes:** 6 - 30

**Fit:** Semi-Fitted



## STYLE FEATURES

- ✓ Easy Care
- ✓ Breathable
- ✓ Stretch
- ✓ Anti-bacterial Protection
- ✓ Air Flow Action Back
- ✓ Side Splits
- ✓ Double Pockets



ROYAL  
with  
Navy trim

NAVY  
with  
Royal trim

CHARCOAL  
with  
Silver trim

TEAL  
with  
Navy trim

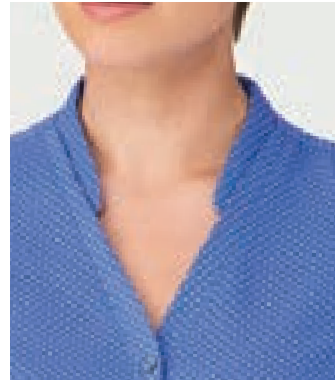




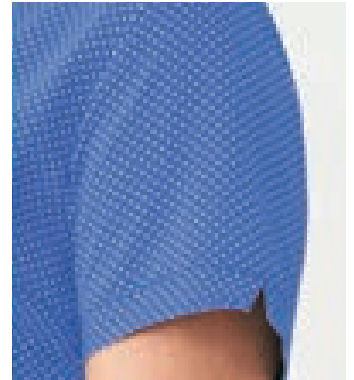


# City Stretch® Spot Tunic

Easy care, easy wear, featuring details that are practical and functional.



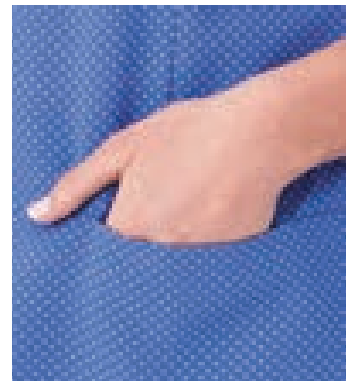
NEHRU NECKLINE



SLEEVE DETAIL



SIDE SPLITS



POCKETS

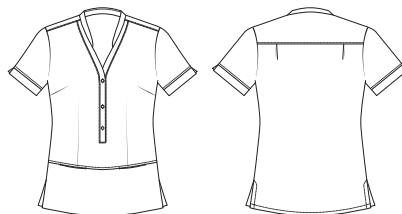
## STYLE DETAILS

**2174:** Short Sleeve

**Fabric:** 100% Polyester with Natural Stretch

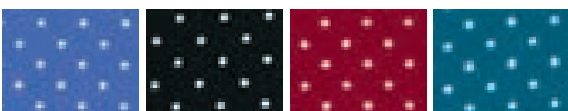
**Sizes:** 4 - 30

**Fit:** Action Fit



## STYLE FEATURES

- ✓ Easy Care
- ✓ Breathable
- ✓ Quick Drying
- ✓ Stretch
- ✓ Action Back
- ✓ Side Splits
- ✓ Double Pockets



BLUE

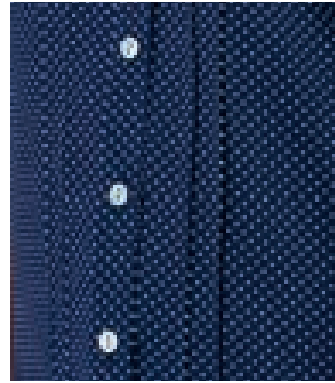
NAVY

RED

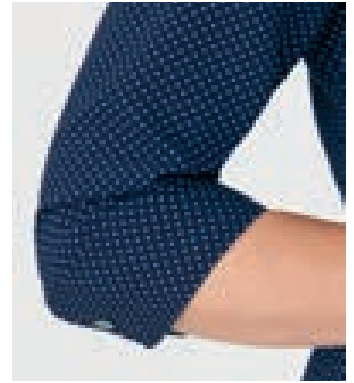
TEAL

# City Stretch® Spot

The ultimate in easy care fabrics.  
Simply wash, hang and wear.



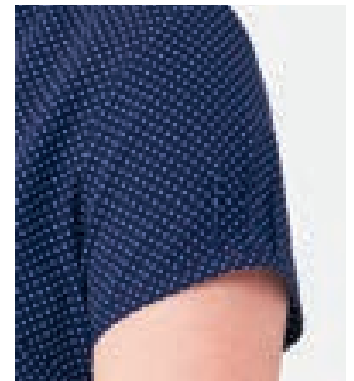
PINTUCK DETAIL FRONT



BUTTON CUFF 3/4 SLEEVE



WONDER BUTTON®



PLEATED SLEEVE

## STYLE DETAILS

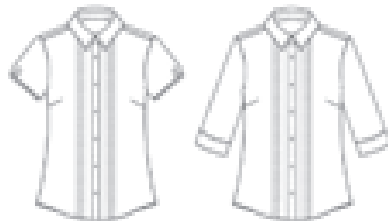
2173: Cap Sleeve

2172: 3/4 Sleeve

**Fabric:** 100% Polyester with  
Natural Stretch

**Sizes:** 6 - 30

**Fit:** Semi-Fitted



## STYLE FEATURES

- ✓ Easy Care
- ✓ Breathable
- ✓ Quick Drying
- ✓ Stretch
- ✓ Wonder Button®
- ✓ Pintuck Detail Front



NAVY

BLUE

COBALT

RED

TEAL

GRAPE

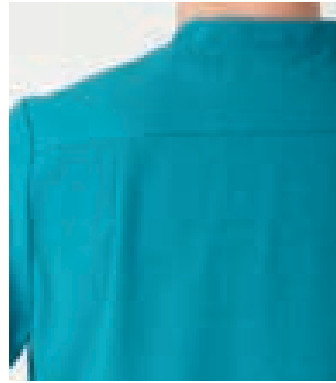
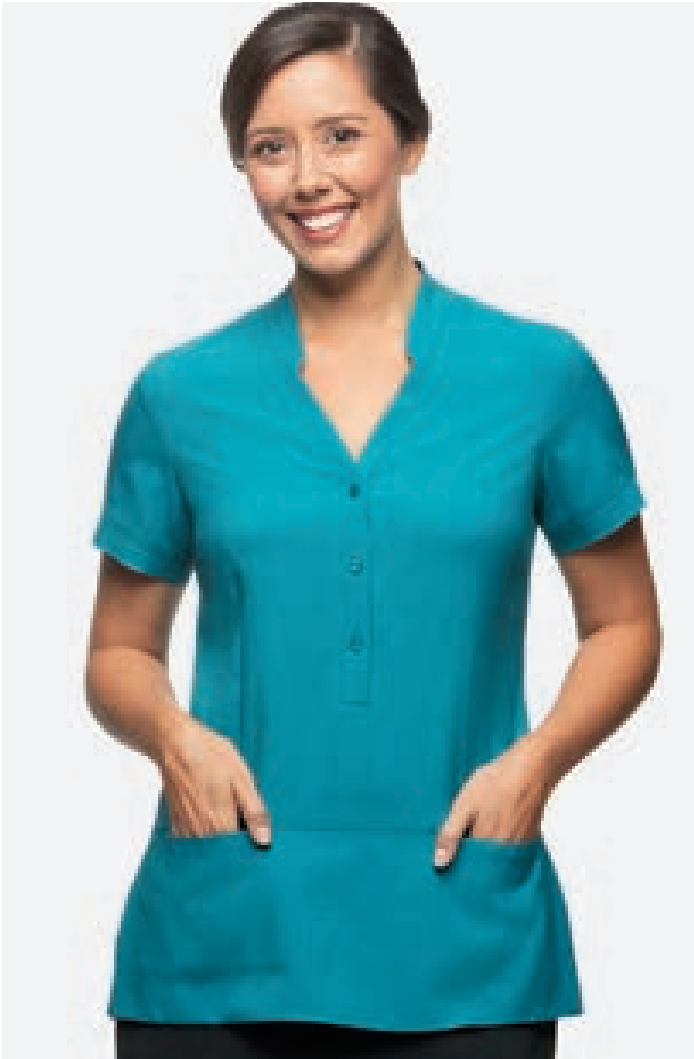
BLACK



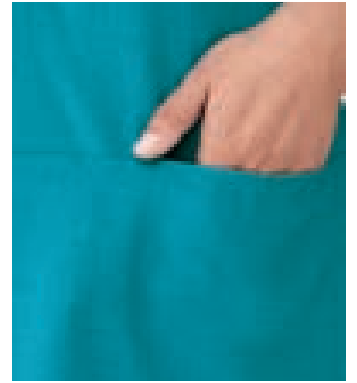


# Ezylin<sup>®</sup> Tunic

Ezylin<sup>®</sup> is the perfect fabric - ideal for all work environments. The unique finish keeps you cool, dry and comfortable.



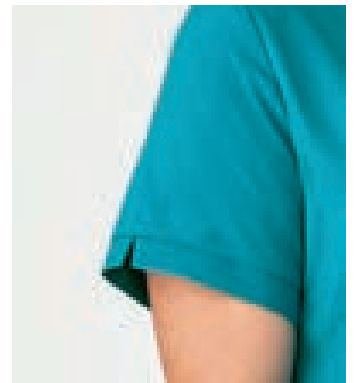
ACTION BACK



POCKETS



SIDE SPLITS



SLEEVE DETAIL

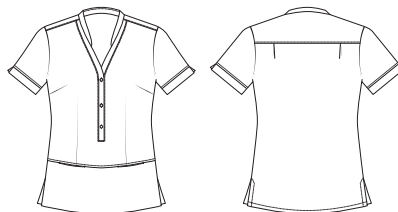
## STYLE DETAILS

**2151:** Short Sleeve

**Fabric:** 100% Breathable Polyester

**Sizes:** 6 - 30

**Fit:** Action Fit



## STYLE FEATURES

- ✓ Easy Care
- ✓ Breathable
- ✓ Quick Drying
- ✓ Action Back
- ✓ Side Splits
- ✓ Double Pockets



TEAL

CHARCOAL

ROYAL

# Ezylin®

Part of the co-ordinate range, Ezylin's special finish repels moisture from the skin keeping you extra dry.



## STYLE DETAILS - MENS

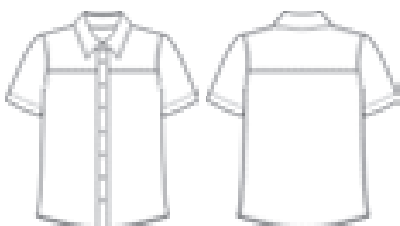
**4145:** Short Sleeve

**Fabric:** 100% Breathable Polyester

**Sizes:** S - 5XL

**Fit:** Sports Fit

**Colours:** Royal, Teal, Charcoal, Denim



## STYLE DETAILS - LADIES

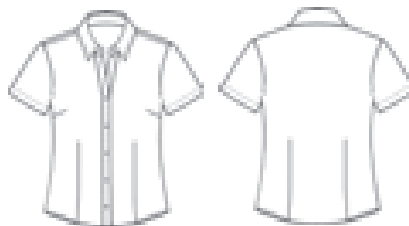
**2145:** 3/4 Sleeve

**2146:** Short Sleeve

**Fabric:** 100% Breathable Polyester

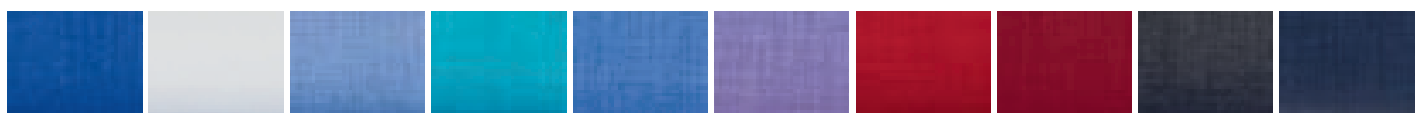
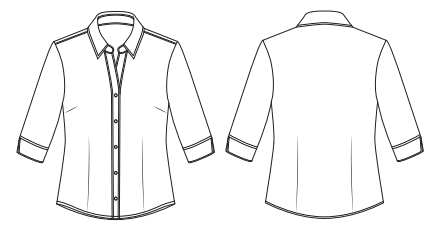
**Sizes:** 6 - 30

**Fit:** Semi-Fitted



## STYLE FEATURES

- ✓ Easy Care
- ✓ Breathable
- ✓ Quick Drying
- ✓ Lightweight



ROYAL WHITE BLUE TEAL OCEAN LILAC CHILLI RED CHARCOAL DENIM

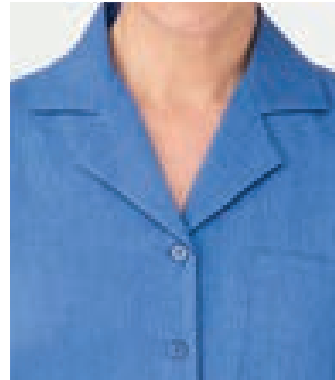




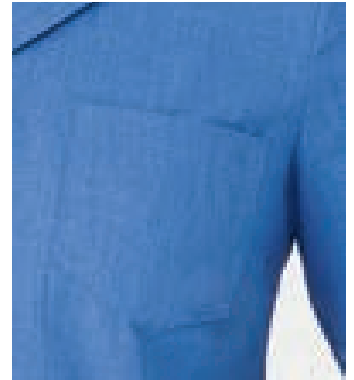


# Ezylin<sup>®</sup> Overblouse

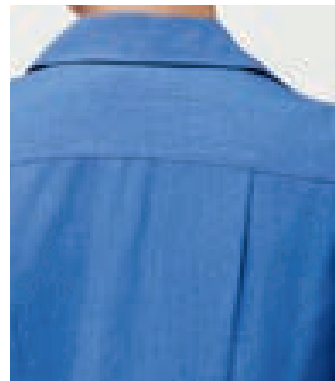
Designed to fit all body shapes and sizes.  
Details include extra length and modesty sleeves.



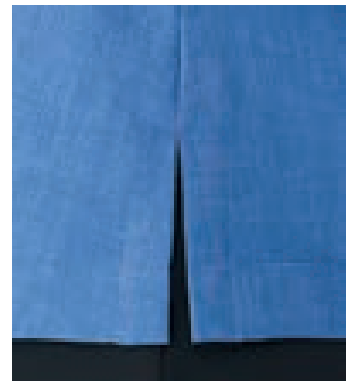
REVERE COLLAR



LEFT CHEST POCKET



ACTION BACK



SIDE SPLITS

## STYLE DETAILS

**2149:** Short Sleeve

**Fabric:** 100% Breathable Polyester

**Sizes:** 6 - 30

**Fit:** Action Fit



## STYLE FEATURES

- ✓ Easy Care
- ✓ Breathable
- ✓ Quick Drying
- ✓ Wonder Button<sup>®</sup>
- ✓ Action Back
- ✓ Side Splits
- ✓ Left Chest Pocket



OCEAN

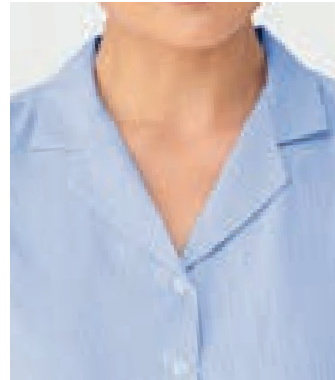
TEAL

ROYAL

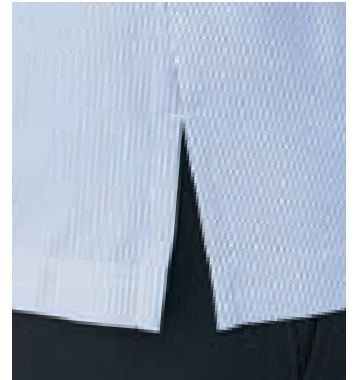
RED

# Ezylin<sup>®</sup> Dual Pocket Stripe

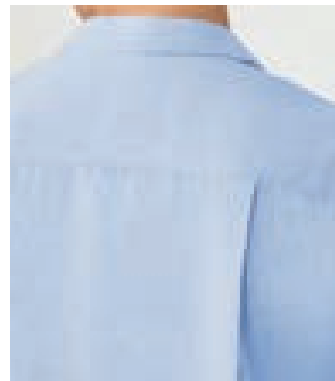
A breathable easy care style with functional features for those in active roles.



REVERE COLLAR



SIDE SPLITS



ACTION BACK



DUAL POCKETS

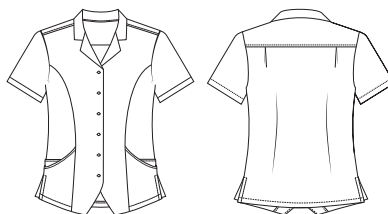
## STYLE DETAILS

**2270:** Short Sleeve

**Fabric:** 100% Breathable Polyester

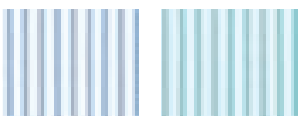
**Sizes:** 6 - 30

**Fit:** Action Fit



## STYLE FEATURES

- ✓ Easy Care
- ✓ Breathable
- ✓ Quick Drying
- ✓ Action Back
- ✓ Side Splits
- ✓ 2 Dual Pockets
- ✓ Wonder Button<sup>®</sup>



BLUE

TEAL





# Drift Print

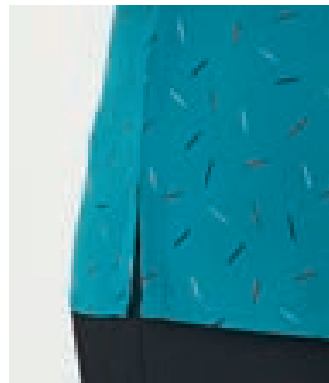
The AeroSilver® fabric provides anti-bacterial protection that eliminates harmful and odour causing germs.



ACTION BACK



LEFT CHEST POCKET



SIDE SPLITS



AEROSILVER® TECHNOLOGY

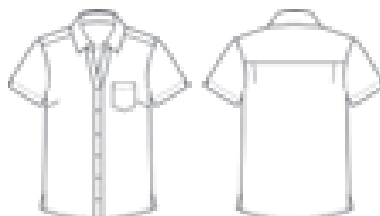
## STYLE DETAILS

**2192:** Short Sleeve

**Fabric:** 100% Polyester AeroSilver®

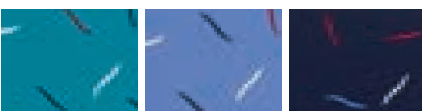
**Sizes:** 6 - 30

**Fit:** Action Fit



## STYLE FEATURES

- ✓ Easy Care
- ✓ Breathable
- ✓ Quick Drying
- ✓ Anti-bacterial Protection
- ✓ Action Back
- ✓ Side Splits
- ✓ Wonder Button®



TEAL

BLUE

NAVY

# City Active 2

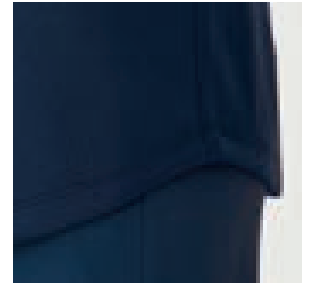
An active scrub in a 4 way stretch easy care fabric, with anti-bacterial protection and multi functional pockets.



2 POCKETS, LEFT SIDE



3 POCKETS, RIGHT SIDE



SHAPED HEM

## STYLE DETAILS - TOP

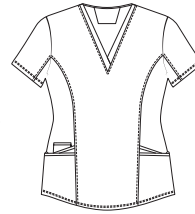
CA2T: Top

**Fabric:** Body 95% Polyester,  
5% Spandex

Side Panel  
100% Polyester

**Sizes:** XXS - 3X

**Fit:** Semi-Fitted



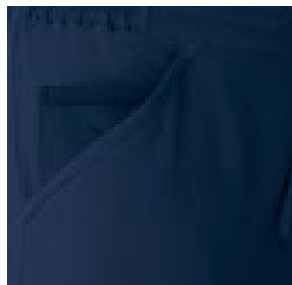
- ✓ 2 Pockets, left side
- ✓ 3 Pockets, right side
- ✓ Knit stretch side panels
- ✓ Contrast or plain colour option



NAVY/NAVY



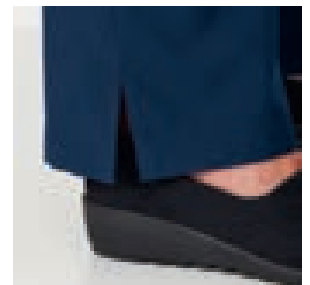
ROYAL/NAVY



STRETCH INNER POCKET



UTILITY POCKET



HEM SPLIT

## STYLE DETAILS - PANTS

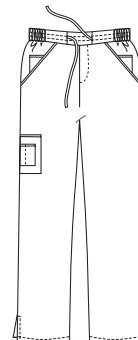
CA2P: Pants

**Fabric:** Pant 95% Polyester,  
5% Spandex

Inner Pocket  
100% Polyester

**Sizes:** XXS - 3X

**Fit:** Semi-Fitted



- ✓ Flat front with external drawstring
- ✓ 3/4 elastic waist
- ✓ Stretch inner pocket
- ✓ 5 compartment utility pocket



NAVY







# City Health® Active

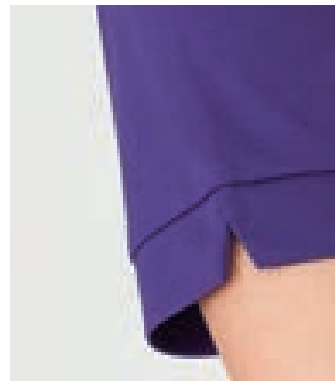
Featuring a superior moisture controlled fabric with anti-bacterial properties.



ROLL COLLAR



POCKETS



SLEEVE DETAIL



AEROSILVER® TECHNOLOGY

## STYLE DETAILS

**2230:** Short Sleeve

**Fabric:** 100% Polyester AeroSilver®

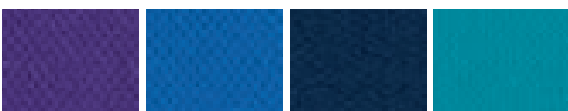
**Sizes:** XXS - 5X

**Fit:** Semi-Fitted



## STYLE FEATURES

- ✓ Easy Care
- ✓ Breathable
- ✓ Quick Drying
- ✓ Stretch
- ✓ Anti-bacterial Protection
- ✓ Double Pockets



LILAC

ROYAL

NAVY

TEAL

# The Knit Woven

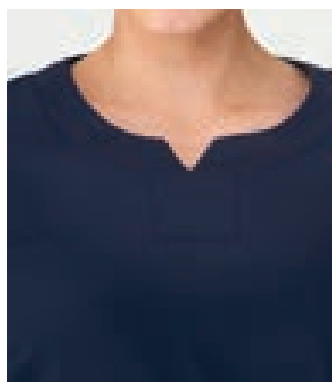
A unique combination of a flattering woven front and a knit back for versatile movement.



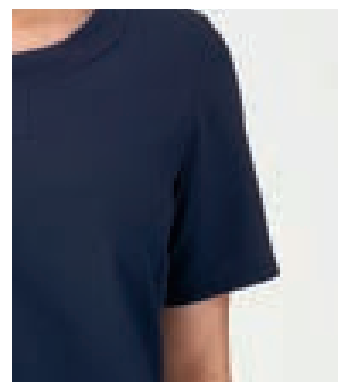
WOVEN FRONT



KNIT STRETCH BACK



V-NECK DETAIL



MODEST SLEEVE LENGTH

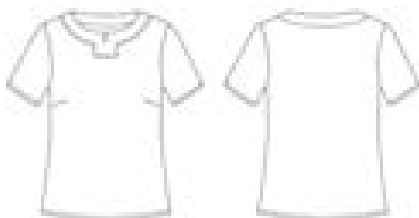
## STYLE DETAILS

**2299:** Short Sleeve

**Fabric:** Woven Front 100% Polyester  
Knit Stretch Back  
94% Polyester, 6% Spandex

**Sizes:** 6 - 26

**Fit:** Semi-Fitted



## STYLE FEATURES

- ✓ Easy Care
- ✓ Breathable
- ✓ Quick Drying
- ✓ Stretch
- ✓ Woven Front
- ✓ Knit Back



NAVY

ROYAL

RED

CHARCOAL

BLACK





# Pippa Knit

Elegant and professional, Pippa flatters every body with it's draping design and gathered front pleat detail.



## STYLE DETAILS

**2222:** Short Sleeve

**2221:** 3/4 Sleeve

**Fabric:** 100% Polyester Matte Jersey

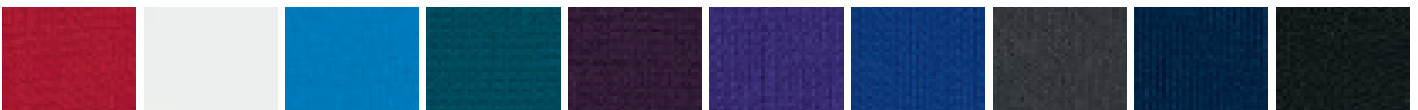
**Sizes:** XXS - 4X

**Fit:** Semi-Fitted



## STYLE FEATURES

- ✓ Easy Care
- ✓ Breathable
- ✓ Quick Drying
- ✓ Stretch
- ✓ Gathered Front Pleat



RED

WHITE

AQUA

JADE

GRAPE

DK LILAC

COBALT

CHARCOAL

NAVY

BLACK

# Pippa Print

A subtle two-toned colour print that co-ordinates with the Pippa Knit.



## STYLE DETAILS

**2223:** 3/4 Sleeve

**2224:** Short Sleeve

**Fabric:** 94% Polyester, 6% Spandex

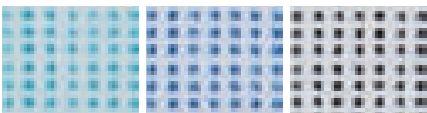
**Sizes:** XXS - 4X

**Fit:** Semi-Fitted



## STYLE FEATURES

- ✓ Easy Care
- ✓ Breathable
- ✓ Quick Drying
- ✓ Stretch
- ✓ Gathered Front Pleat



JADE

BLUE

CHARCOAL







# Smart Knit

An essential knit that caters to all shapes and sizes, with the convenience of three sleeve lengths.



## STYLE DETAILS

**2290:** 3/4 Sleeve  
**2291:** Short Sleeve  
**2292:** Sleeveless

**Fabric:** 100% Polyester  
Matte Jersey

**Sizes:** XXS - 4X

**Fit:** Semi-Fitted



## STYLE FEATURES

- ✓ Easy Care
- ✓ Breathable
- ✓ Quick Drying
- ✓ Stretch
- ✓ 3 Sleeve Lengths



ROYAL

CHILLI

NAVY

SILVER

BLACK

# So Ezy

This easy fit 3/4 sleeve with roll-up feature, has a mens co-ordinate for that perfect team look.



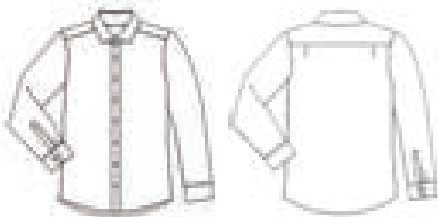
## STYLE DETAILS - MENS

**4263:** Long Sleeve

**Fabric:** 60% Cotton,  
40% Polyester

**Sizes:** S - 5XL

**Fit:** Slim Fit



## STYLE DETAILS - WOMENS

**2263:** 3/4 Sleeve

**Fabric:** 100% Polyester with  
Natural Stretch

**Sizes:** 6 - 26

**Fit:** Action Fit



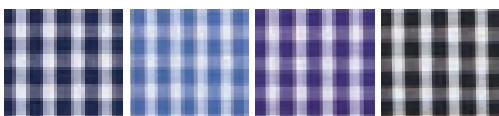
ROLL UP TAB  
SLEEVE

## STYLE FEATURES WOMENS

- ✓ Easy Care
- ✓ Quick Drying
- ✓ Optional Rollup Tab Sleeve

## MENS

- ✓ Easy Care
- ✓ Spread Collar
- ✓ Adjustable Cuff



NAVY COBALT GRAPE BLACK



NAVY COBALT CHARCOAL BLACK GRAPE RED SILVER





# Pinfeather

The classic pinfeather co-ordinate range features a soft colour palette that's smart and professional.



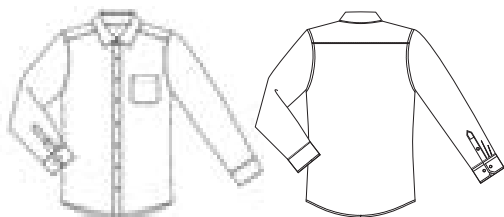
## STYLE DETAILS - MENS

**4265:** Long Sleeve

**Fabric:** 60% Polyester,  
40% Cotton

**Sizes:** S - 5XL

**Fit:** City Fit



## STYLE DETAILS - WOMENS

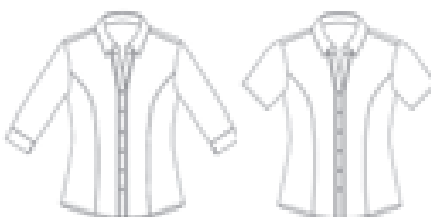
**2265:** 3/4 Sleeve

**2267:** Short Sleeve

**Fabric:** 57% Polyester,  
38% Cotton, 5% Lycra

**Sizes:** 6 - 30

**Fit:** Semi-Fitted

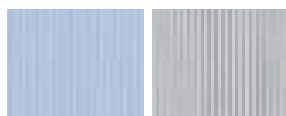


## STYLE FEATURES WOMENS

- ✓ Easy Care
- ✓ Stretch
- ✓ Wonder Button®
- ✓ Shaped Hem

## MENS

- ✓ Easy Care
- ✓ Spread Collar
- ✓ Adjustable Cuff
- ✓ Chest Pocket



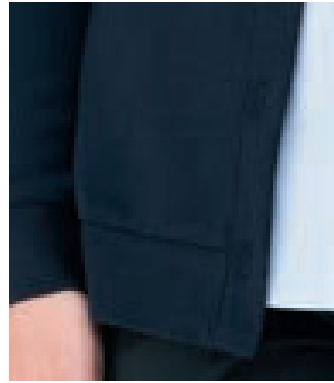
BLUE CHARCOAL



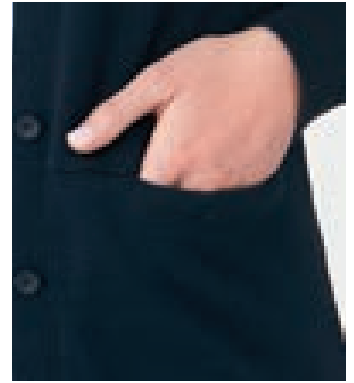
BLUE CHARCOAL LILAC

# City 2-Pocket Overknit

This Australian Merino Wool blend cardigan features two pockets and complements our women's shirt range.



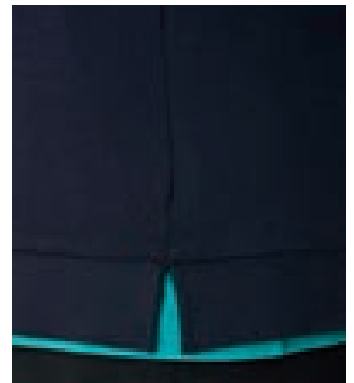
RIBBED HEM



POCKET



RIBBED CUFF



SIDE SPLITS

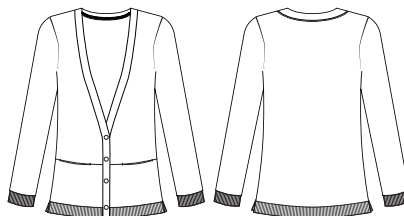
## STYLE DETAILS

**2278:** Long Sleeve

**Fabric:** 50% Australian Merino Wool  
50% Low Pill Acrylic

**Sizes:** XXS - 4X

**Fit:** Semi-Fitted



## STYLE FEATURES

- ✓ Easy Care
- ✓ Stretch
- ✓ Side Splits
- ✓ Double Pockets
- ✓ Ribbed Hem and Cuff



NAVY



# TEAM ROYAL *“It’s important that our team and their*



## FUNCTION & RECOGNITION

*Our garments reflect the roles and functions of your staff with each design projecting a strong sense of identification and recognition to clients and families.*

- Range of technical features specifically for health care
- Double or single pocket options
- Visual fabric designs including, stripes, plains and prints
- Different depths and grade of colour within one story
- Selected matching men’s co-ordinates available.



*roles are easily identifiable to our clients and their families.”*



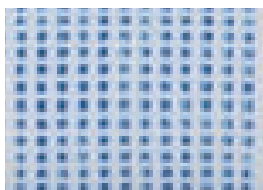
**EZYLIN®**  
STYLE: 4145



**4 WAY STRETCH  
TUNIC**  
STYLE: 2280



**KNIT WOVEN**  
STYLE: 2299



**PIPPA PRINT**  
STYLE: 2224



**EZYLIN® TUNIC**  
STYLE: 2151

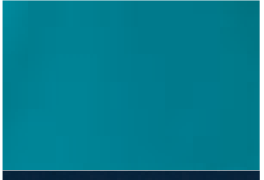


## A COLOUR STORY

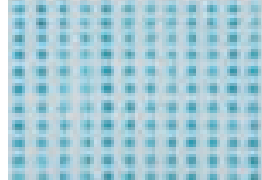
*We offer the most popular colour palettes that complement most brand identities and offer a large range of co-ordinating patterns and fabrics for added diversity.*

- Ideal for department based work environments
- Reinforces a strong unified image
- Strong and appealing colours that stand out to clients
- Maintain individuality in the workplace whilst still creating a strong team feel.

*express diversity, individuality and unity within our team.”*



**4 WAY STRETCH TUNIC**  
STYLE: 2280



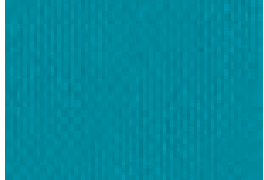
**PIPPA PRINT**  
STYLE: 2224



**EZYLIN®**  
STYLE: 4145



**EZYLIN® TUNIC**  
STYLE: 2151



**CITY HEALTH® ACTIVE**  
STYLE: 2230

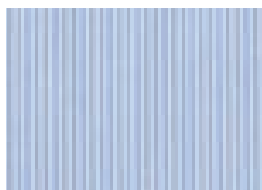


## EASY CARE & BREATHABLE FABRICS

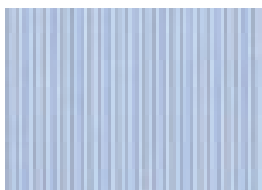
*For demands such as shift work, last minute call ins and home call-outs, it's essential that garments are easy to wear, easy to care for, are lightweight and breathable.*

- Machine washable fabrics for everyday wear
- Quick drying fabrics for those who are time poor
- Fabrics have an easy care finish, with minimal or no ironing required that look fresh all day
- Fabrics are lightweight, breathable and cool to wear.

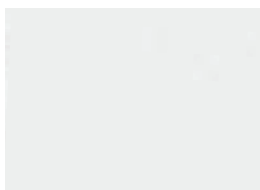
*are a must - it's one less hassle for our staff to think about."*



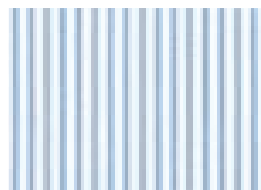
**PINFEATHER**  
STYLE: 4265



**PINFEATHER**  
STYLE: 2267



**PIPPA KNIT**  
STYLE: 2222



**EZYLIN® DUAL  
POCKET STRIPE**  
STYLE: 2270

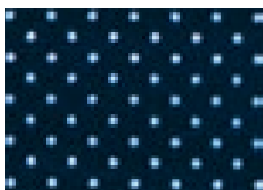


## COMFORT & PRACTICALITY

*With consideration to the physical nature of your role, we offer fabrics, styles and sizes that create comfortable and easy to wear garments that move with you.*

- Stretch fabrics for the active work environment
- Quick drying fabrics for people on the go
- Breathable fabrics ideal for the physically active role
- Action back styles to accommodate stretching movements
- Side splits for extra comfort.

*it's important to feel comfortable and free to move”.*



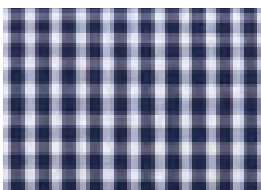
**CITY STRETCH® SPOT  
TUNIC**  
STYLE: 2174



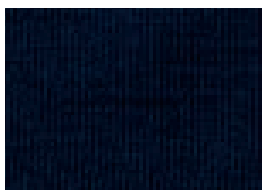
**KNIT WOVEN**  
STYLE: 2299



**4 WAY STRETCH  
TUNIC**  
STYLE: 2280



**SO EZY CHECK**  
STYLE: 4263



**CITY 2 POCKET  
OVERKNIT**  
STYLE: 2278



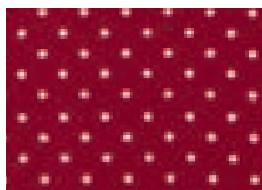
## DURABILITY & PRESENTATION

*Hard working, long lasting quality fabrics ensure our garments work just as hard as you do while maintaining a professional appearance all day.*

- Specific materials selected for their long lasting features
- Quality construction and stitching to remain strong in a demanding work environment
- High quality fabrics constructed to maintain garment shape
- Versatile styles that move with you, not restrict you.



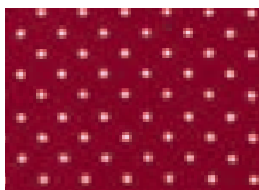
*of high quality to keep up with our daily work demands.”*



**CITY STRETCH SPOT®  
TUNIC**  
STYLE: 2174



**KNIT WOVEN**  
STYLE: 2299



**CITY STRETCH SPOT®  
OVERBLOUSE**  
STYLE: 2172



**EZYLIN®  
OVERBLOUSE**  
STYLE: 2149

# TEAM CHARCOAL

*“Well tailored uniforms*

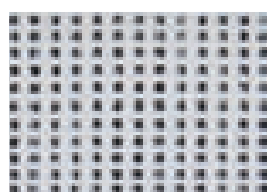


## A RANGE OF DESIGNS & SIZES

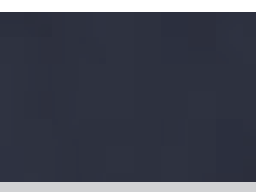
*From the design, style and cut of the shirts, we consider body width, height and range of movement. We have a style to fit and flatter every body.*

- Shirts tailored specifically to fit and flatter a wide range of body shapes and sizes
- A range of designs to suit the occupational categories of your team
- Fabrics that perform across a variety of environments.

*ensure staff feel comfortable and proud of their presentation.”*



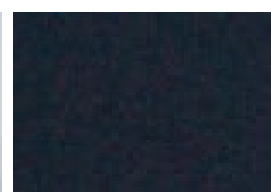
**PIPPA PRINT**  
STYLE: 2224



**4 WAY STRETCH TUNIC**  
STYLE: 2280



**SMART KNIT**  
STYLE: 2290



**KNIT WOVEN**  
STYLE: 2299

# TEAM GRAPE

*“Whether a new recruit or a*

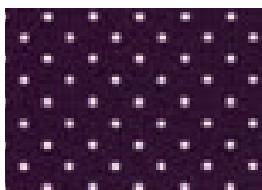
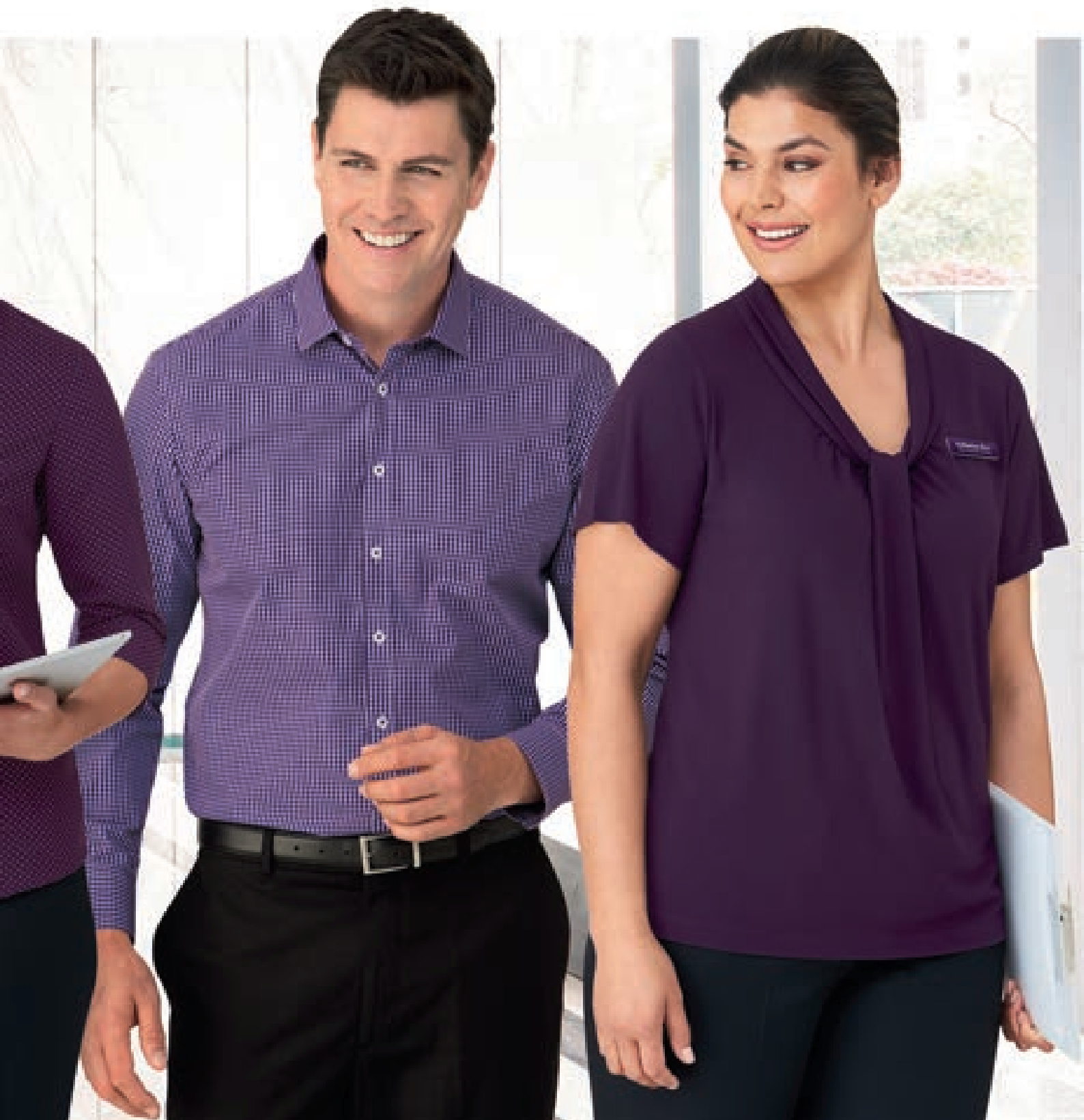


## QUICK DELIVERY

*Your order will be processed quickly because every style, size and colour is available on Stock Service. Team work and fulfilling client requests is important to us.*

- Reliable stocks and ongoing availability
- We carry large stocks to ensure your order is delivered on time
- Our dedicated customer service team ensures quick responses to your enquiry.

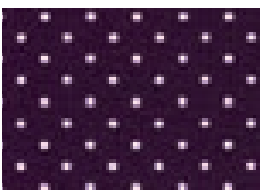
*uniform update, our staff must always look part of their team.”*



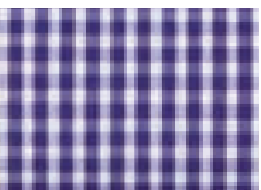
**CITY STRETCH® SPOT**  
STYLE: 2173



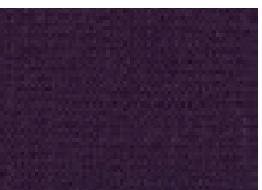
**SO EZY**  
STYLE: 2263



**CITY STRETCH® SPOT**  
STYLE: 2172



**SO EZY CHECK**  
STYLE: 4263



**PIPPA KNIT**  
STYLE: 2222

# Fabric choice is the key to maintaining our great reputation.

Our fabrics are sourced from leading suppliers around the world. They are tested for their quality and ability to perform to the highest standards. All are carefully selected to meet both your easy care/easy wear requirements and the demands of your work place environment.



## **OUR QUALITY**

Our promise is to maintain the highest of quality standards with every City Collection garment manufactured. We achieve this by working closely with our suppliers to ensure our fabrics and production standards are never compromised and always meet the expectations of our clients.

## **OUR COLOURS**

Our versatile range of co-ordinates within a flexible colour palette allows you to mix and match to create your individual identity. Our unique colours and designs offer many options to enhance your business and its brand, because when your staff look good, you look good.

## **OUR STYLES**

Our designers have developed a sophisticated range of styles to cater for every body type. Employees come in all shapes and sizes and our range offers a variety of styles in easy care, stretch and breathable fabrics to cater for the needs of the individual employee.

## **OUR COMMITMENT**

Our commitment is to provide a wide range of quality garments that will service your uniform requirements. That's why every style and colour in our catalogue is available for a minimum 2 years from its inception, and is available on Stock Service for immediate delivery.

## **OUR INNOVATION**

Our extensive research in healthcare industries reveal new challenges that we're confident we meet due to constant innovation in fabric, design function and durability.

## The Knit Woven

STYLE: 2299 100% Polyester (front) 94% Polyester, 6% Elastane (back)



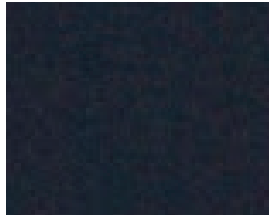
ROYAL



NAVY



RED



CHARCOAL



BLACK

## 4 Way Stretch Tunic

STYLE: 2280 95% Polyester, 5% Spandex



ROYAL



NAVY



CHARCOAL



TEAL

## City Stretch® Pinfeather

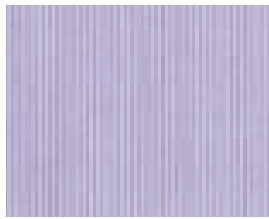
STYLE: 2265, 2267 57% Polyester, 38% Cotton, 5% Lycra



BLUE



CHARCOAL



LILAC



BLUE



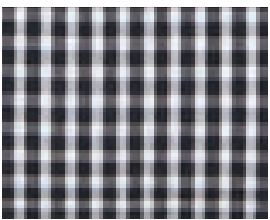
CHARCOAL

## Pinfeather

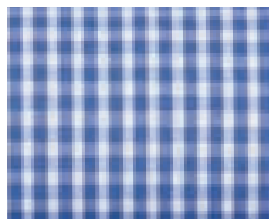
STYLE: 4265 60% Polyester, 40% Cotton

## So Ezy Check

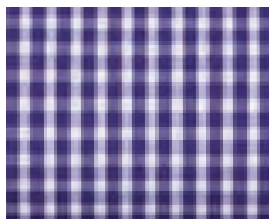
STYLE: 4263 60% Cotton, 40% Polyester



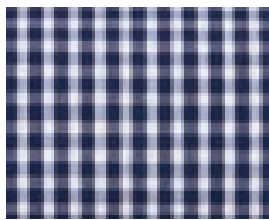
BLACK



COBALT



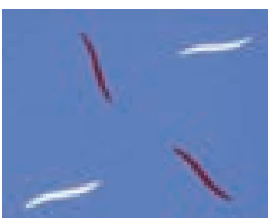
GRAPE



NAVY

## Drift Print

STYLE: 2192 100% Polyester AeroSilver®



BLUE



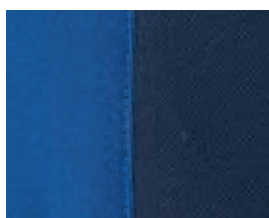
TEAL



NAVY

## City Active 2

STYLE: CA2: 95% Polyester, 5% Spandex



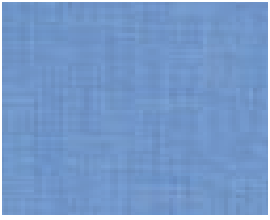
ROYAL/NAVY



NAVY/NAVY

## Ezylin® Womens

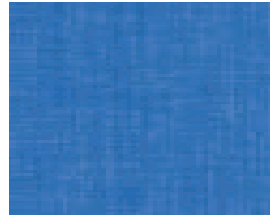
STYLE: 2145, 2146 100% Breathable Polyester



BLUE



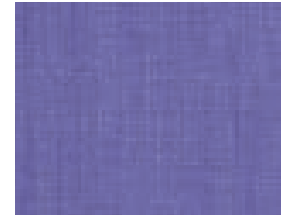
CHILLI



OCEAN



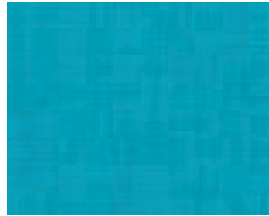
RED



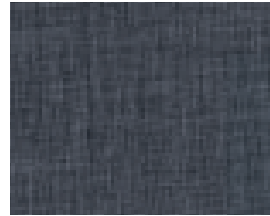
LILAC



ROYAL



TEAL



CHARCOAL



DENIM



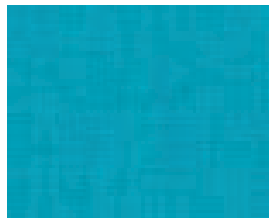
WHITE

## Ezylin® Tunic

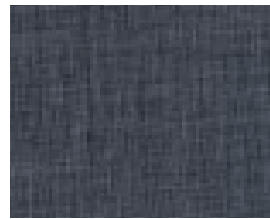
STYLE: 2151 100% Breathable Polyester



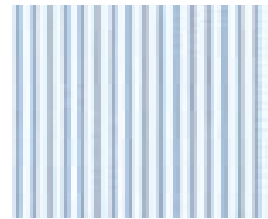
ROYAL



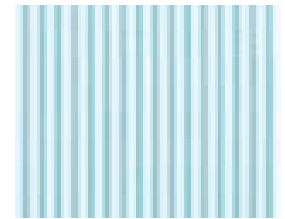
TEAL



CHARCOAL



BLUE



TEAL

## Ezylin® Dual Pocket Stripe

STYLE: 2270 100% Breathable Polyester

## Ezylin® Overblouse

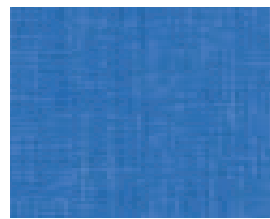
STYLE: 2149 100% Breathable Polyester



ROYAL



TEAL



OCEAN



RED

## Ezylin® Mens

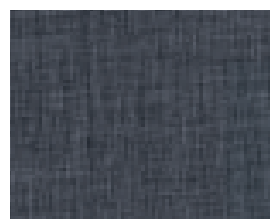
STYLE: 4145 100% Breathable Polyester



ROYAL



TEAL



CHARCOAL

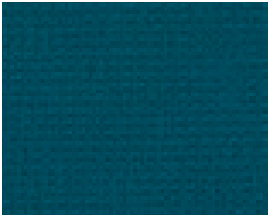


DENIM

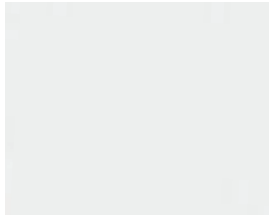


## Pippa Knit

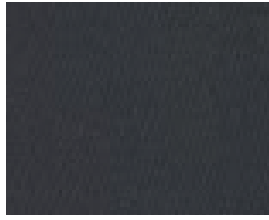
STYLE: 2221, 2222 FABRIC: 100% Polyester Matte Jersey with Natural Stretch



JADE



WHITE



CHARCOAL



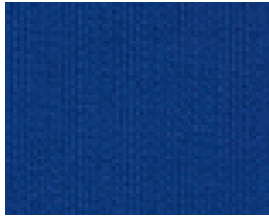
RED



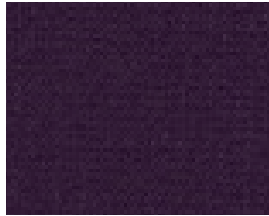
BLACK



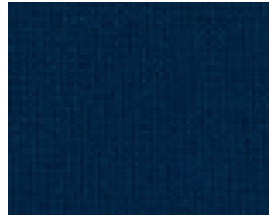
AQUA



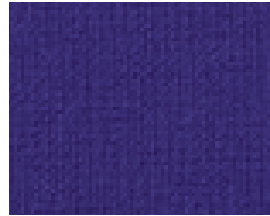
COBALT



GRAPE



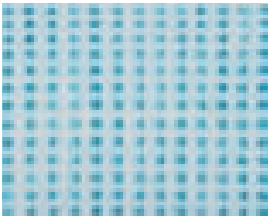
NAVY



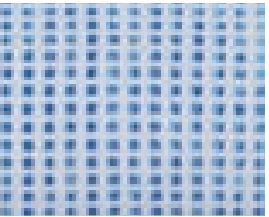
DARK LILAC

## Pippa Print

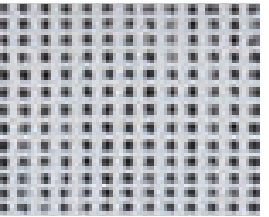
STYLE: 2223, 2224 94% Polyester, 6% Spandex



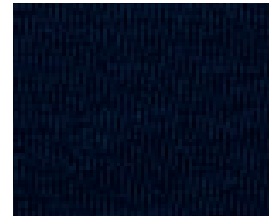
JADE



BLUE



CHARCOAL



NAVY

## City 2 Pocket Overknit

STYLE: 2278

50% Australian Merino Wool,  
50% Low Pill Acrylic

## Smart Knit

STYLE: 2290, 2291, 2292 100% Polyester Matte Jersey with Natural Stretch



ROYAL



SILVER



NAVY



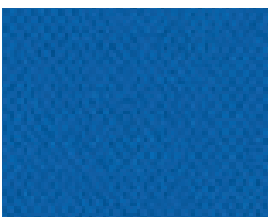
CHILLI



BLACK

## CityHealth® Active

STYLE: 2230 100% Polyester AeroSilver®



ROYAL



LILAC



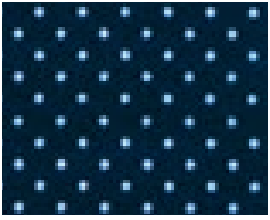
NAVY



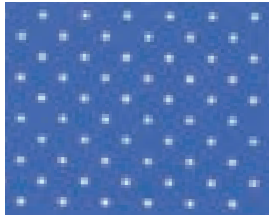
TEAL

## City Stretch® Spot

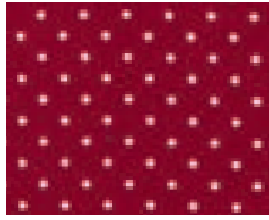
STYLE: 2172, 2173 100% Polyester with Natural Stretch



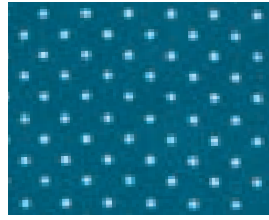
NAVY



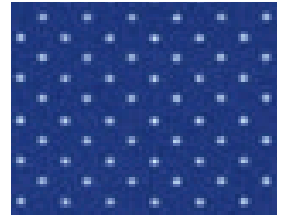
BLUE



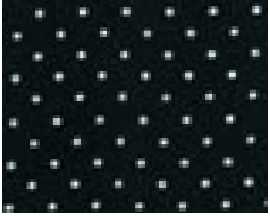
RED



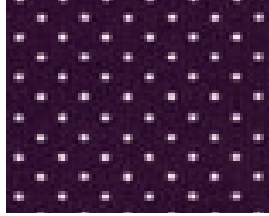
TEAL



COBALT



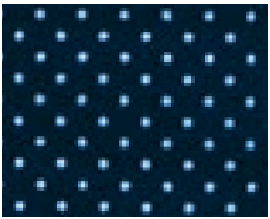
BLACK



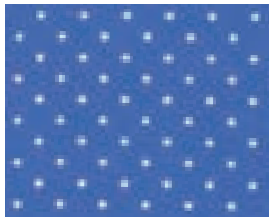
GRAPE

## City Stretch® Spot Tunic

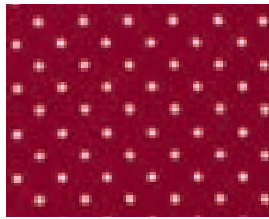
STYLE: 2174 100% Polyester with Natural Stretch



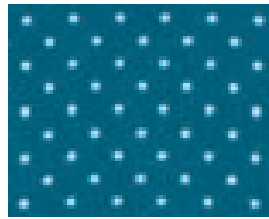
NAVY



BLUE



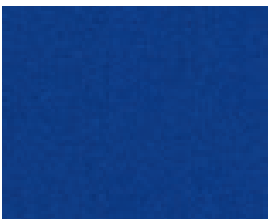
RED



TEAL

## So Ezy

STYLE: 2263 100% Polyester with Natural Stretch



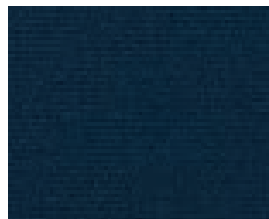
COBALT



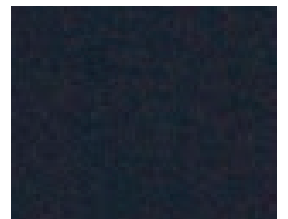
RED



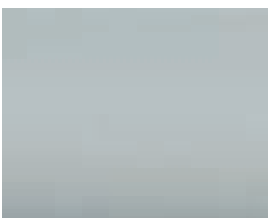
BLACK



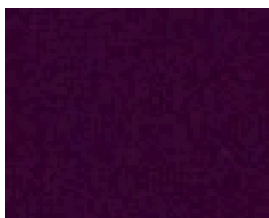
NAVY



CHARCOAL



SILVER



GRAPE

# Garment Size Guide

## WOMEN'S SIZING GUIDE

Size	4	6	8	10	12	14	16	18	20	22
<b>Bust (cm)</b>	78	83	88	93	98	103	109	115	121	127

Size	24	26	28	30
<b>Bust (cm)</b>	133	139	145	151

## WOMEN'S KNIT GUIDE

XXS	XS	S	M	L	XL	2X	3X	4X	5X
6	8-10	10-12	14	16	18-20	20-22	22-24	26-28	28-30

## WOMEN'S FIT GUIDE

### ACTION FIT

This is a more relaxed fit, straight through the body and longer. It is generally worn out not tucked in. Suitable for the slightly fuller figure.

### SEMI FITTED

This style is shaped through the body with room to move. It is neither too slim nor too loose and can be worn tucked or untucked. This fit is suitable for most body types.



## MEN'S SIZING GUIDE

Neck Size	38	39	40	41	42	43	44	46	48	50	52
<b>Body Size</b>	S	M	M	L	L	XL	XL	2XL	3XL	4XL	5XL
<b>Chest (cm)</b>	95	100	100	105	105	110	110	115	120	125	130

## MEN'S FIT GUIDE

### SPORTS FIT

Suitable for all shapes, our Sports Fit has a straighter block with only a slight taper making it more generous through the waist. No pleats in back.

### CITY FIT

Slightly slimmer than our Sports Fit through the chest, shoulders and waist. Longer in length to stay tucked in. Two side pleats in the back yoke.

### SLIM FIT

Our slimmest mens fit. A slimmer silhouette that fits more closely to the body.



NOTE: Size charts are body measurements. The garment will measure larger than the body to allow ease and comfort.



**CITYHEALTH<sup>®</sup>**  
by CITYCOLLECTION

[www.citycollection.com.au](http://www.citycollection.com.au)

- All garments are available on Stock Service
- Colours are as close as possible to actual fabric colours but should be used as a guide only
- City Collection reserve the right to update and improve the styling of items featured in our catalogue
- The design and layout of this catalogue is subject to copyright©.